

# COMPORTAMENTO ANIMALE



-Società chiuse



-Specializzazione  
compiti



-Società aperte

-Società patriarcale

-Società matriarcali





-Monogami







-Poligami





-Abbandonano i cuccioli

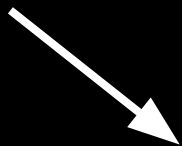
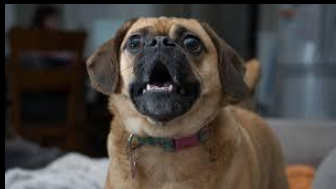




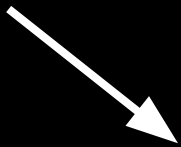
-Accudiscono cuccioli  
fino a quando non  
diventano  
autosufficienti



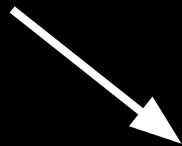




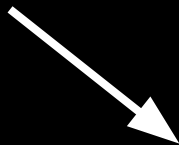
Segnali visivi



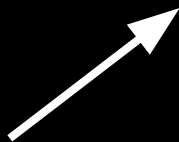
segnali tattili



Segnali Acustici

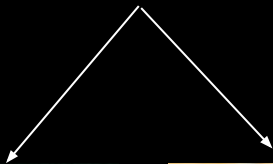


Segnali chimici





istinto



prelevare il latte

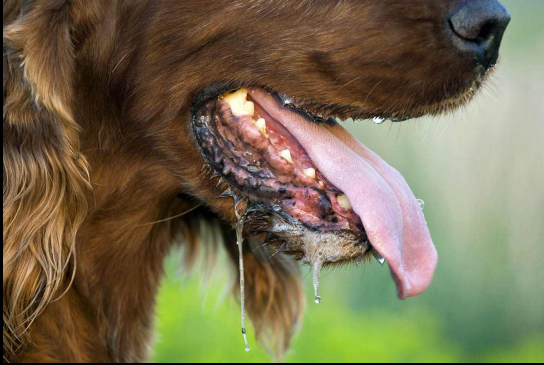


respirare

appreso



## condizionamento o associazione



Imprinting



## apprendimento per errori e tentativi



L'assuefazione



## L'apprendimento per imitazione

